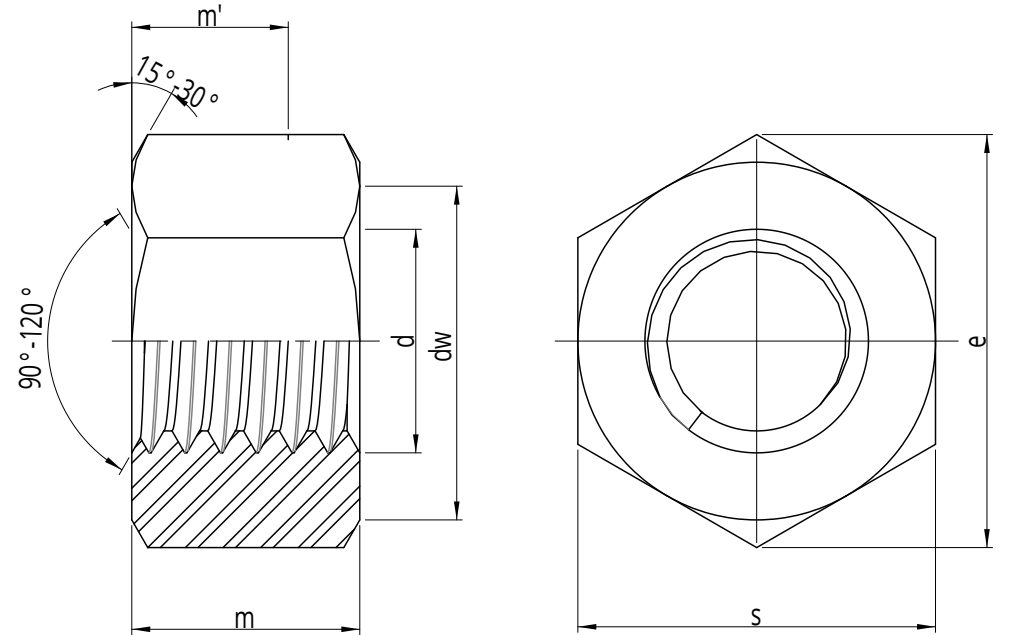



FURTHER INFORMATION

Diameter (d)	Pitch	s	m
M5	0.80	8.00-7.78	4.70-4.40
M6	1.00	10.00-9.78	5.20-4.90
M8	1.25	13.00-12.73	6.80-6.44
M10	1.50	16.00-15.73	8.40-8.04
M12	1.75	18.00-17.73	10.80-10.37
M14	2.00	21.00-20.67	12.80-12.10
M16	2.00	24.00-23.67	14.80-14.10
M18	2.50	27.00-26.16	15.80-15.10
M20	2.50	30.00-29.16	18.00-16.90
M22	2.50	34.00-33.00	19.40-18.10
M24	3.00	36.00-35.00	21.50-20.20



 PRECISION TECHNOLOGY SUPPLIES <small>Stainless Steel Industrial Fastenings & Precision Turned Parts</small>	Part No. A403206A2
www.pts-uk.com +44 (0)1342 410758	M6 HEXAGON FULL NUT ISO 4032 A2-70 STAINLESS STEEL
Information in this drawing is provided for reference only	